

# Wild Steed Worx Big Dog Side Cover Hardware Kit

Start by removing your side covers and removing the old grommets.  
Do not lubricate Well Nut or Bushing before installing.  
Insert new grommet with a slight twist as you push it in to the hole.  
Install the Well Nut Lock Ring to the Well Nut.



Figure 1

Using (2) pair of needle nose pliers push against the lock ring with one pair of needle nose and pull up on the well nut with the other to secure as shown in Figure 1. If the Well Nut is a little loose simply pull the Lock Ring back off and with a hammer tap the flared up portion of the Lock Ring down slightly.

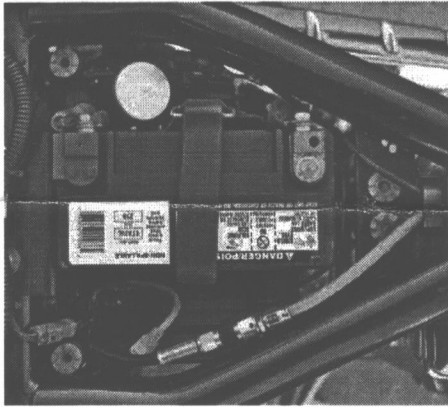
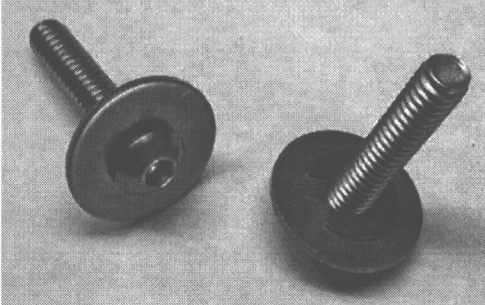


Figure 2

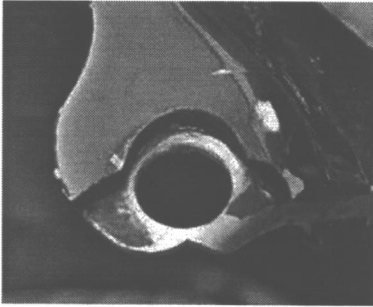
Once you have installed all four well nuts in the above manner install the bushings to the frame as shown in Figure 2 below.

Assemble each of the four Screws, washers and E-Clips as shown below.

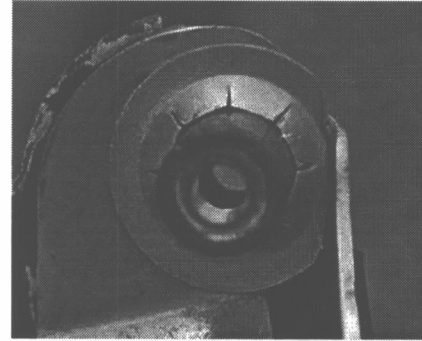
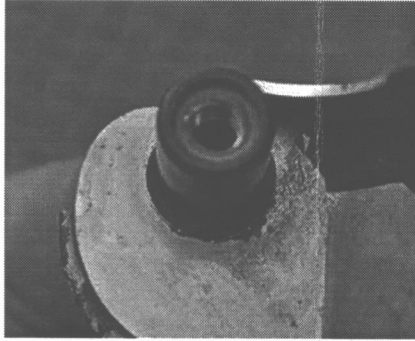


You're ready to install the side covers.  
Apply a small amount of Anti-Seize to the 1/4-20 screws.  
Thread the 1/4-20 screws into the bushings.  
Do not force them through.  
Do Not Use Thread Locker.  
**DO NOT OVERTIGHTEN THE 1/4-20 SCREWS**  
Tighten until you just begin to feel some resistance then STOP.

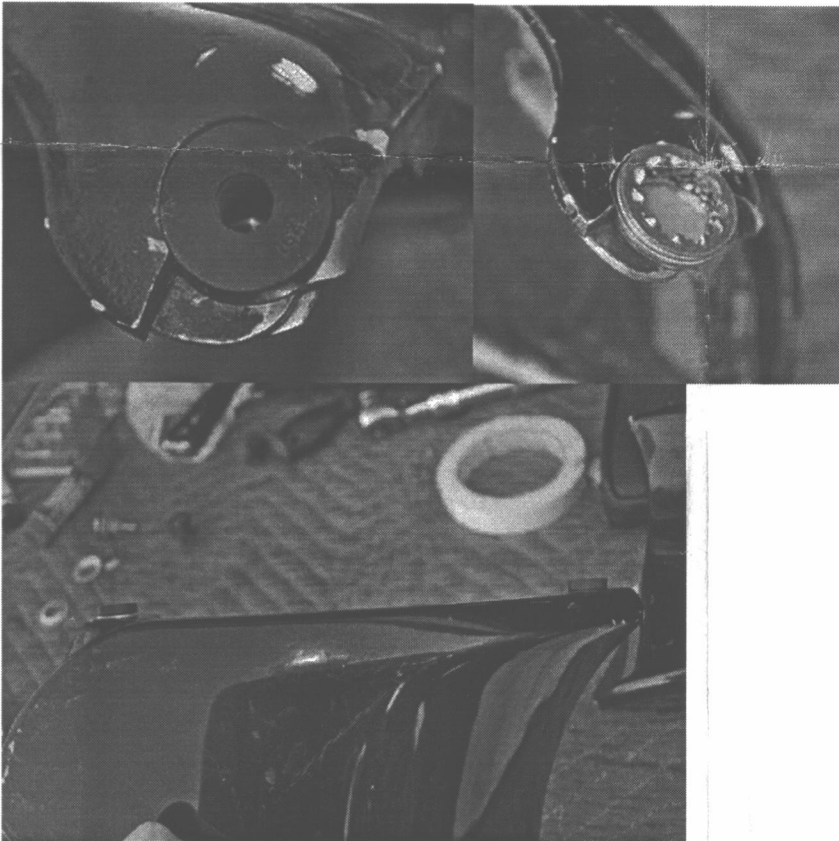
## Problem Solving



If you have an oversized hole the lock ring will secure the grommet to allow for tightening. In some cases you may have to modify the lock ring slightly.



In many cases you will have a situation like the one below. A stack of M122 washers will do the trick and keep everything in line.



This cover is ready for installation.

Although you can see the washers on the left slightly when it is installed everything compresses slightly and you can no longer see them.

And finally, remember to check your cover screws regularly when you check your battery connections to insure they do not come loose. WSW can also repair your side covers to a new condition, ready for paint, for around \$150. Call us for details.